



Petersham Road
Creekmoor Poole BH17 7DP
£220,000

D/E

DAVIDSON ESTATES
sales & lettings





Details

**** CASH BUYERS ONLY**** This detached bungalow presents an excellent opportunity for those looking to create their dream home situated in a sought after location near the picturesque Creekmoor Ponds Nature Reserve.

Property Comprises

Upon entering, you are welcomed by an entrance porch that leads into the hallway. Offering a good sized kitchen and a separate living/dining room which is a generous size. This bungalow features a shower room and two well proportioned double bedrooms, with the master bedroom boasting direct access to the garden.

Outside, you will find a single garage and a driveway that accommodates multiple vehicles, ensuring ample parking for residents and guests alike. The south-east facing garden is a wonderful space for enjoying the sun, perfect for gardening enthusiasts or simply unwinding in a peaceful setting.

A short walk away from local shops, bus routes and the picturesque Creekmoor Ponds Nature Reserve. This natural setting is perfect for leisurely strolls or enjoying the local wildlife.

This bungalow is an ideal project for those looking to personalise their living space in a sought-after area. With its potential, location and no forward chain, this property on Petersham Road is not to be missed.

****Please Note - Cash buyers only due to the property suffering from subsidence****







More Information

- No Forward Chain
- Ideal Project
- Close to Creekmoor Ponds
- Driveway For Multiple Vehicles
- South East Facing Garden
 - Garage
- Large Lounge/Diner
- Front Garden

Tenure

Tenure: Freehold
EPC Rating: D
Council Tax: BCP Council, Band D

Davidson Estates

To see our properties before they go on the market please like us on Facebook (Davidson Estates Sales & Lettings), Instagram (davidsonsestates) & YouTube (davidsonsestates)

Copyright

All photos, video, and drone footage are copyrighted by Davidson Estates Sales & Lettings LTD. All rights reserved.

Any redistribution or reproduction of part or all of the contents in any form is prohibited other than the following:

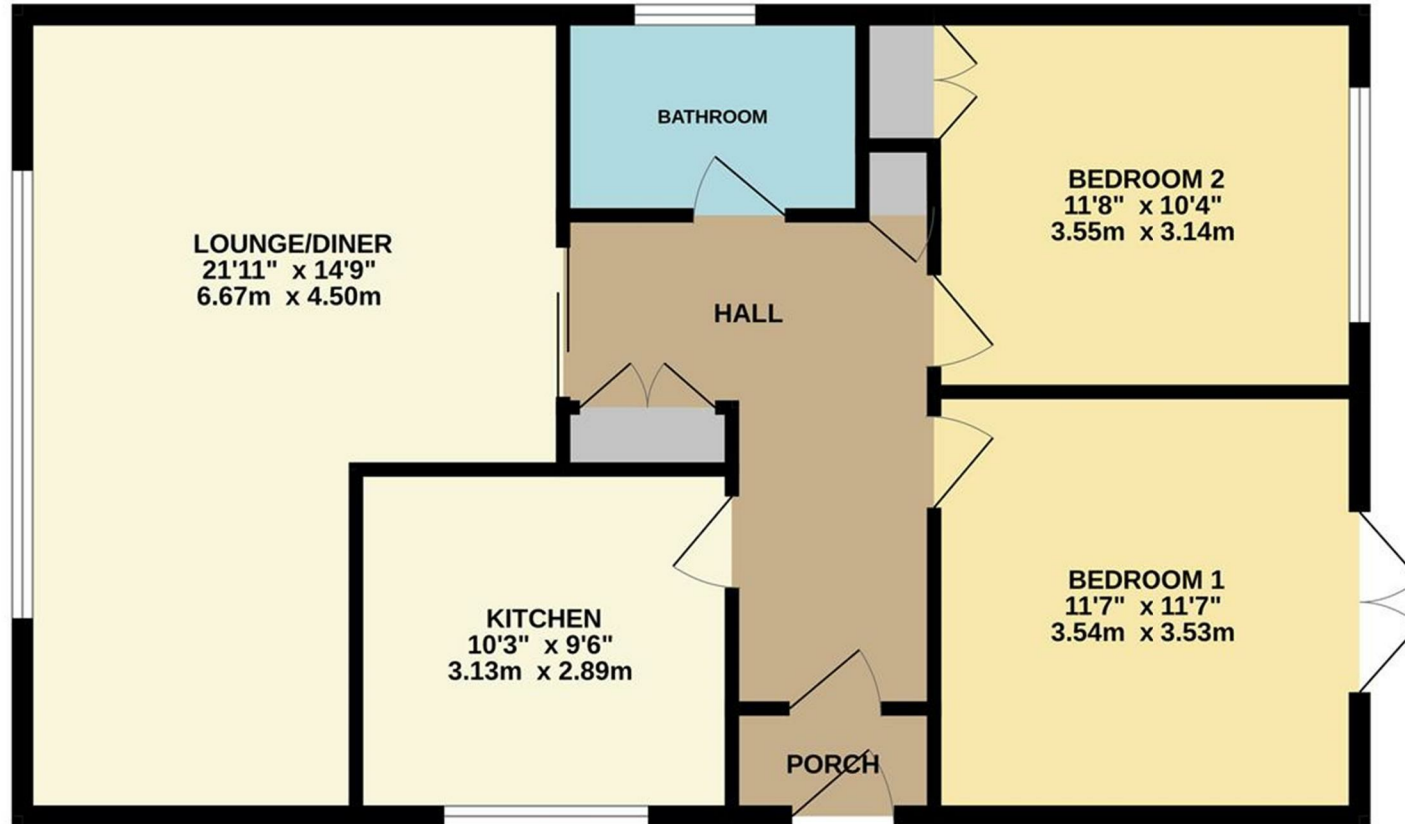
1. You may print or download to local hard disk extracts for your personal and non-commercial use only
2. You may copy the content to individual third parties for their personal use, but only if you acknowledge Davidson Estates as the source of the material

You may not, except with our express written permission, distribute or commercially exploit the content. Nor may you transmit it or store it on any other website or another form of the electronic retrieval system.



hello@davidsonsestates.com | davidsonsestates.com

GROUND FLOOR
800 sq.ft. (74.3 sq.m.) approx.



TOTAL FLOOR AREA : 800 sq.ft. (74.3 sq.m.) approx.

Whilst every attempt has been made to ensure the accuracy of the floorplan contained here, measurements of doors, windows, rooms and any other items are approximate and no responsibility is taken for any error, omission or mis-statement. This plan is for illustrative purposes only and should be used as such by any prospective purchaser. The services, systems and appliances shown have not been tested and no guarantee as to their operability or efficiency can be given.
Made with Metropix ©2025



CONTACT US

Whichever way suits you...

07557 025044 | 07713 870543

hello@davidsonsestates.com

01202 287606

www.davidsonsestates.com

